

JOIN ICON'S SUMMER INTENSIVES!

VISUAL AND PERFORMING ARTS
123 NORTH LINN ST.
IOWA CITY, IA



OUR MISSION

TO PROVIDE STUDENTS
WITH A SAFE,
INTERDISCIPLINARY, AND
HOLISTIC ARTS EDUCATION
WITH A FOCUS ON
DESIGNING A PATH
SPECIFIC TO EACH
LEARNER'S PERSONAL
ARTISTIC GOALS.

CONTACT US!

 319-804-5943

 EMAIL US!

 123 N LINN ST
IOWA CITY, IA

WHY IOWA CONSERVATORY?

Our intensives offer an unparalleled opportunity to immerse in the arts through focused training in musical theatre, dance (contemporary and classical), and visual arts. With expert instruction, students will build a strong foundation and refine their skills in a fun, collaborative, and supportive environment.

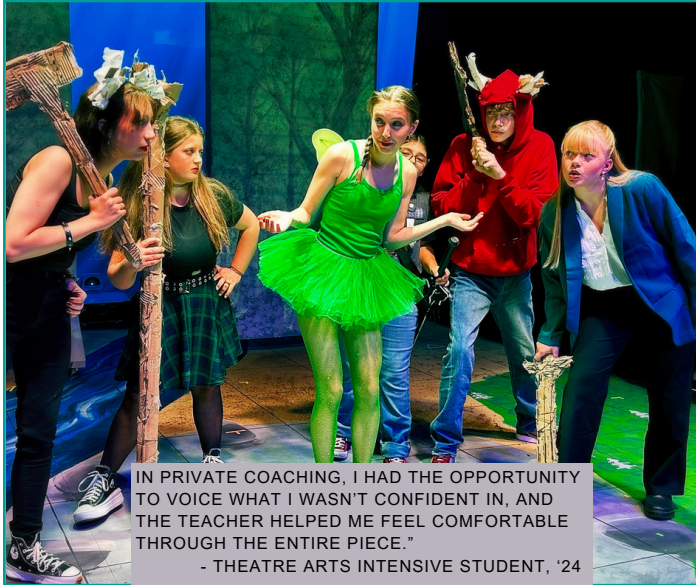
Alongside passionate peers, the summer intensive student experience includes vibrant community activities in Iowa City and participate in masterclasses with industry professionals. Students that complete ICON's summer sessions leave inspired, confident, and ready to elevate their artistry.

This summer, make your mark with ICON!

[REGISTER HERE](#)

MUSICAL THEATRE

[REGISTER HERE](#)



GRADES
Rising 7-12

PROGRAM LENGTH
2 Weeks

PROGRAM DATES:
SESSION 1: June 16- 28
SESSION 2: June 30 - July 12

TUITION
\$1050/ per session

AUDITION REQUIREMENTS:
None. Auditions are only required to participate in the summer musical.

SUMMER MUSICAL DATES
July 10-13

EVENING REHEARSALS
June 16- July 9
Auditions open for ages 13-19.



WHAT YOU'LL LEARN:

Students participate in daily singing, acting, and dance classes focused on foundational techniques and skill development. The program also features masterclasses led by guest artists from professional theatre and Broadway, offering unique industry insights. Afternoons are dedicated to rehearsals where students put their training into action, culminating in a final showcase that highlights the talents of all participants.

A DAY IN THE LIFE:

Start your mornings rotating through core acting, dance, and music classes, focusing on building technical foundations. Afternoons feature private vocal and acting coaching sessions or practice time, followed by group showcase rehearsals. On masterclass and special event days, the schedule shifts to include visits to professional theatre venues or workshops with guest artists, providing inspiration and real-world insights.

DANCE

[REGISTER HERE](#)



WHAT YOU'LL LEARN:

Dancers will refine their technique and artistry in classical, contemporary, and jazz styles while gaining essential skills for video, film, and live performance. They will explore the work of renowned choreographers, create original pieces to build a personal portfolio, and develop improvisation skills under expert guidance. The program also provides invaluable industry connections, helping students navigate the next steps in their dance education and careers. With training that has led past participants to prestigious institutions like Juilliard, Alvin Ailey, and Miami City Ballet, ICON prepares serious dancers for pre-professional and professional opportunities.

A DAY IN THE LIFE:

Partnering with Open Doors at Nolte, ICON dancers study with some of the world's most prolific dance professionals. Students attend classes in modern, ballet, pointe, contemporary, improvisation, choreography, repertory, variations, musical theatre, conditioning and Pilates.

GRADES

Rising 7-12

PROGRAM LENGTH

2 Weeks

PROGRAM DATES

CLASSICAL DANCE:

June 9- 20

CONTEMPORARY DANCE:

June 30 - July 12

TUITION

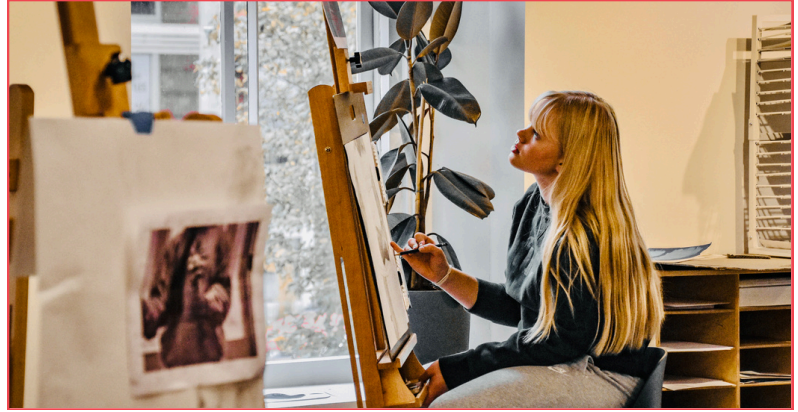
\$1050/ per session

AUDITION REQUIREMENTS

None.

VISUAL ARTS

[REGISTER HERE](#)



GRADES

Rising 7-12

PROGRAM LENGTH

2 Weeks

PROGRAM DATES:

SESSION 2: June 30 - July 12

TUITION

\$1050/ per session

WHO SHOULD JOIN

Creative individuals interested in visual art who want dedicated studio time in Drawing, Painting & Mixed Media.

AUDITION REQUIREMENTS:

None.

WHAT YOU'LL LEARN:

Through instructor and artist demonstrations, as well as class projects, students will explore drawing and painting fundamentals and learn to make artistic choices that lead to compelling compositions and expressions. Additionally, students will develop a highly individualized piece or body of work, designed from concept to final presentation at the end of the intensive.

This intensive provides focused studio time for extended projects, supports individual artistic goals, and helps students build portfolio-ready work. In a collaborative, studio-like environment, artists work independently while engaging in a professional atelier setting.

A DAY IN THE LIFE:

Mornings are dedicated to exploration, featuring instructor demos, short-term studio projects, workshops with professional guest artists, and visits to galleries and museums. Afternoons provide focused studio time, where students receive guidance in developing their individual projects. While each project is unique, students will engage in critiques and collaborate in a shared studio environment.

Frequently Asked Questions

Q: Who should join?

A: Students entering grades 7-12.

Q: Is It required to attend both sessions?

A: No, you can attend one or both sessions! Summer musical participants must be available June 16- July 9 for evening rehearsals.

Q: Is financial assistance available?

A: Based on need, there is limited assistance available. Please reach out to admissions@iowaconservatory.org for more information.

Q: What is the schedule like?

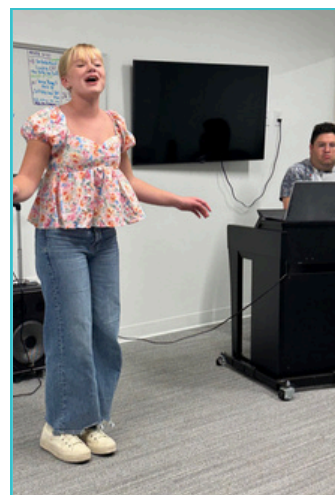
A: Students attend intensives 9AM-4PM Monday-Friday, with student life activities planned for evenings and weekends. A detailed student life schedule will be sent to registered students the week prior to attendance.

Q: What are the tuition and fees?

A: Each session's tuition is \$1,050, with an optional field trip fee of \$225 per session. Boarding (if needed) is \$300 per session.

Q: Do you provide boarding?

A: Yes.





WHAT'S INCLUDED?

- *Furnished Apartments:* Each unit includes a bed frame, mattress, dresser, desk, couch, and dining table.
- *Meals & Assistance:* Students will be taken grocery shopping for breakfast and lunch supplies, and dinner will be coordinated by the residential assistant in their apartment or at a local restaurant. The residential assistant will also be available to help students with all meal preparation.
- *Laundry Access:* Students in two-week programs can do laundry mid-stay over the weekend.

WHAT ARE THE BOARDING FEES?

- \$300/ per session (14 days)
- We recommend that parents/guardians send their teen with a credit card and/or ATM card for groceries and miscellaneous items.



WHAT DO I NEED TO BRING?

- A detailed list of necessary items will be given ahead of time alongside our Summer Intensives Handbook.

[READY TO SIGN UP?](#)